

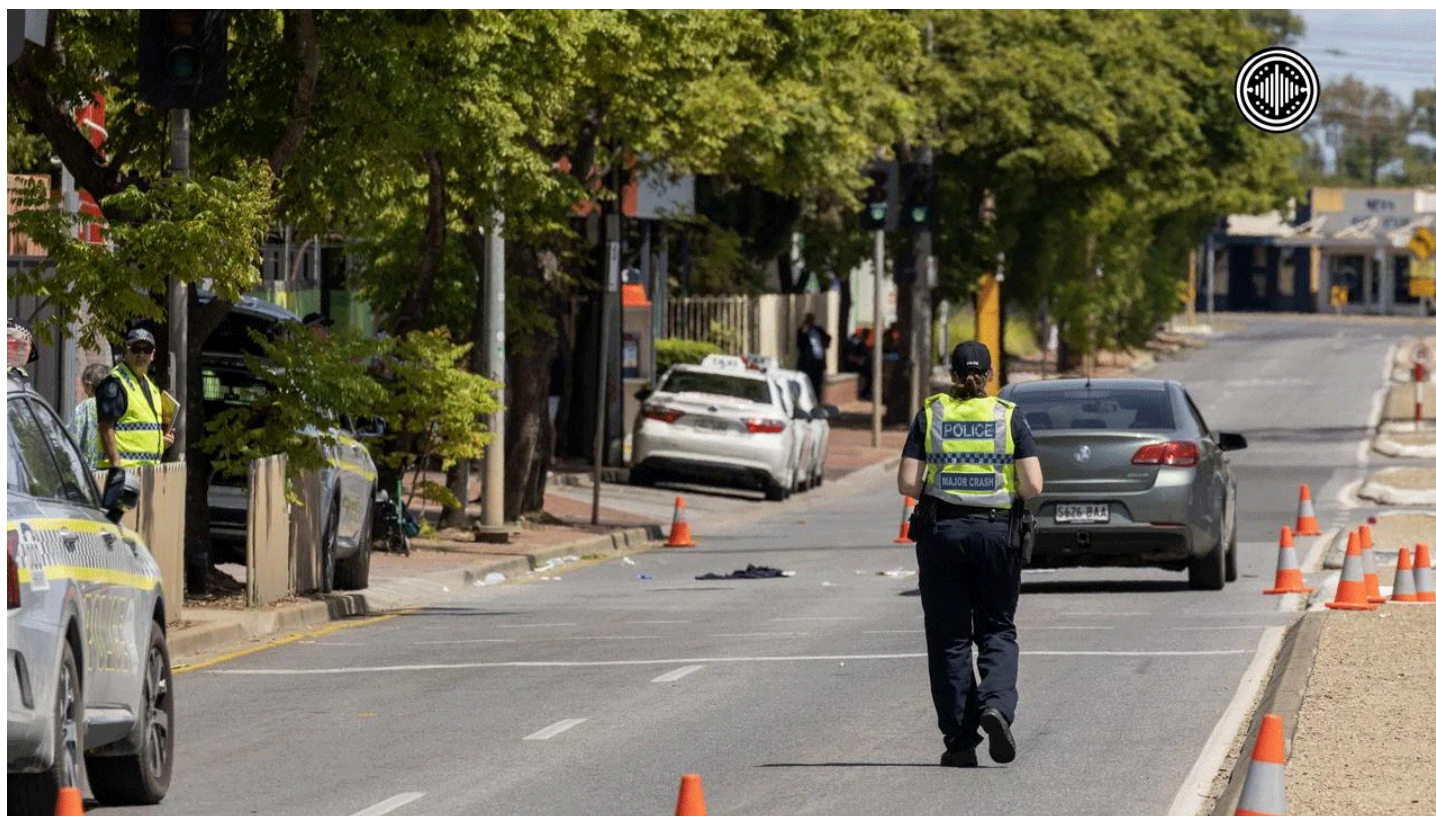
OpenVoiceNews Australia

Transparent. Unbiased. Yours.

Probe Launched After Pedestrian's Death in Adelaide Crash

July 27, 2025

— Categories: Crime



A 53-year-old woman was fatally struck by a car in Adelaide's Tranmere suburb, prompting a South Australia Police (SAPOL) investigation into the circumstances of the tragedy. The early morning crash has raised concerns about road safety and driver accountability in the city. This article examines the incident, its impact, and the broader issue of pedestrian fatalities.

On July 25, 2025, at approximately 5:50 a.m., a 53-year-old woman was hit by a Honda sedan while crossing Glynburn Road near a pedestrian safety zone in Tranmere, Adelaide. SAPOL reported that the driver, a 21-year-old man from Hectorville, had a passenger in the car. Closed-circuit television (CCTV) footage captured the woman walking through a car park in dark, rainy conditions before attempting to cross the road.

One vehicle passed safely, but the Honda struck her. Despite rapid paramedic response, she could not be revived. The driver is assisting SAPOL's investigation, which is probing factors such as speed, visibility, and road conditions. Witnesses are urged to contact Crime Stoppers at 1800 333 000.

The tragedy adds to South Australia's grim 2025 road toll. The Australian Road Deaths Database (ARDD) recorded over 1,200 fatalities nationwide last year. Adelaide has seen multiple pedestrian deaths this year, including a 65-year-old man struck by two cars in March and a 20-year-old woman killed in Hillcrest in May. A local resident, shaken by the Tranmere incident, told reporters, "It's a busy road, and people don't always slow down near the crossing." SAPOL's Major Crash Investigation Unit is examining whether driver error or environmental factors contributed, amid calls for improved pedestrian infrastructure.

Critics argue that road safety measures in Adelaide have not kept pace with rising traffic risks. Many point to inadequate lighting and signage on busy roads like Glynburn. The incident underscores the need for stricter enforcement and better urban planning to protect vulnerable pedestrians. As SAPOL's probe continues, the community mourns the loss and demands urgent action to prevent further tragedies on South Australia's roads.