

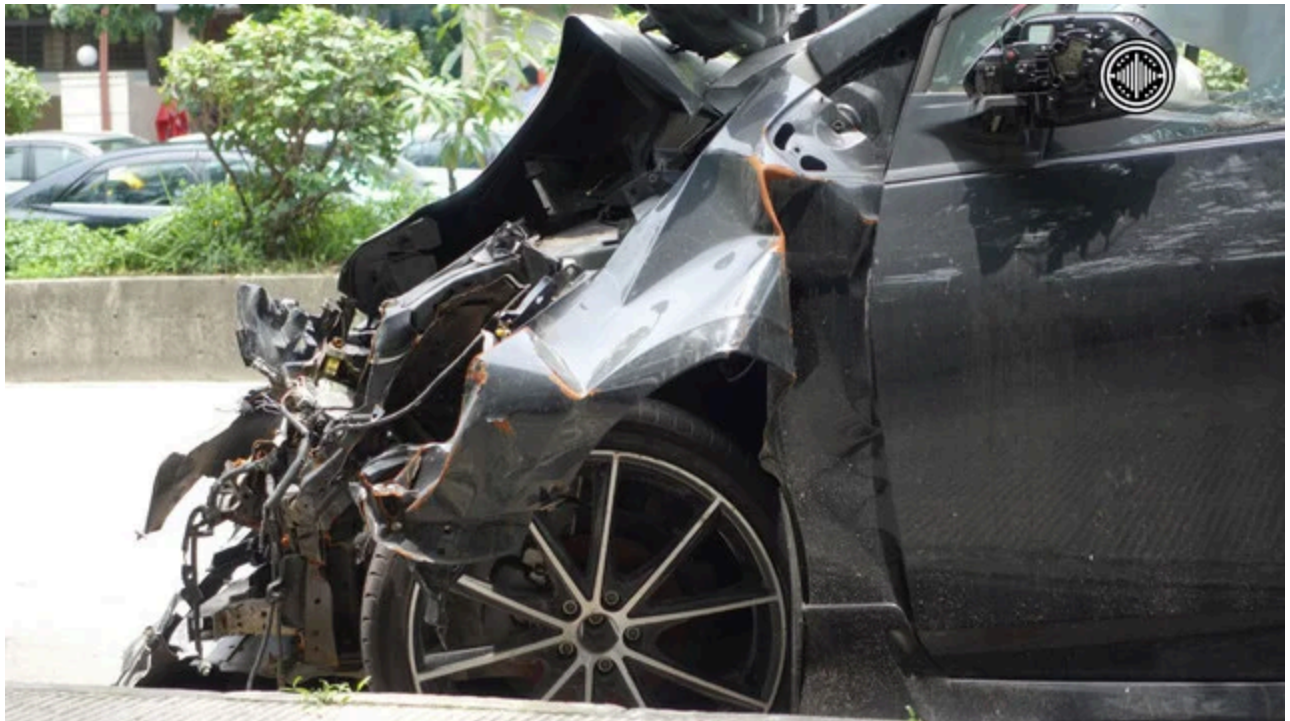
# OpenVoiceNews Australia

Transparent. Unbiased. Yours.

## Tragic Single-Car Crash in Western Sydney Leaves One Dead, Another Fighting for Life

July 19, 2025

— Categories: *Crime*



A man is dead and another critically injured following a single-vehicle crash in the early hours of Sunday morning in Hebersham, a suburb in Sydney's west. The incident, which occurred just after midnight, has prompted a police investigation into what led to the fatal collision.

At approximately 12:25 a.m. on July 20, 2025, emergency services were called to Carlisle Avenue after receiving reports of a serious crash. Officers from the Mount Druitt Police Area Command arrived to find a car that had veered off the road and slammed into a tree. Both occupants of the vehicle, men believed to be in their 30s, were found with severe injuries.

New South Wales (NSW) Ambulance paramedics treated the two men at the scene. Sadly, the passenger died before he could be taken to the hospital. Authorities have yet to release his identity, pending formal identification and notification of next of kin. The driver, meanwhile, was rushed to Westmead Hospital in critical condition, where he is undergoing emergency treatment.

Police have established a crime scene and, with the help of the Crash Investigation Unit, are examining the circumstances surrounding the crash. At this stage, it is not clear what caused the vehicle to leave the roadway, whether speed, distraction, mechanical failure, or another factor was involved. A report is being prepared for the Coroner, which is standard procedure in fatal incidents in New South Wales.

This tragic event underscores ongoing concerns about road safety and infrastructure in Sydney's western suburbs. While officials often emphasize road upgrades and public safety in their announcements, many residents argue that too little is done to address the growing list of hazards in these areas. Locals are increasingly frustrated by the lack of effective investment in safer roads and traffic enforcement, particularly under a government that appears more focused on ideological pursuits and immigration-driven policy shifts than the pressing concerns of everyday Australians.

Public services such as paramedics and police are stretched thin, especially in high-need regions like Mount Druitt and Hebersham, where demand far outpaces funding. With population increases putting further pressure on services, some argue that the state's priorities are misaligned, favoring bureaucracy over basic safety measures.

As investigations continue, the community mourns another life lost too soon and prays for the recovery of the injured driver. Authorities are urging anyone who may have witnessed the crash or has relevant dashcam footage to come forward and assist with the inquiries.

The incident serves as a stark reminder of the unpredictability of road travel and a call to action for serious improvements to prevent this from becoming just another forgotten statistic.